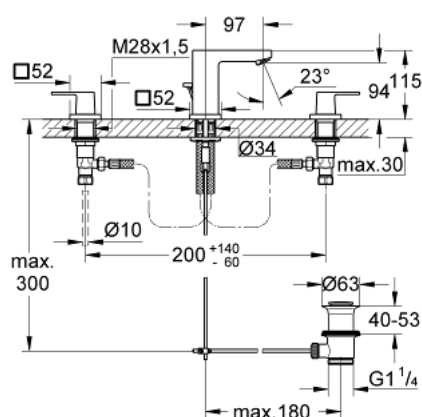


20 351 000 **EUROCUBE 3-HOLE BASIN MIXER S-SIZE**

PRODUCT DESCRIPTION

- Colour: chrome
- metal lever
- ceramic headparts 1/2", 90°
- GROHE Long-Life finish
- GROHE FastFixation Plus installation system
- spout with mousseur
- pop-up waste set 1 1/4"
- pressure-proof, flexible connection hoses between spout and side valves
- union nut 1/2" x 10.5 mm

20 351 000 EUROCUBE 3-HOLE BASIN MIXER S-SIZE



SPARE PARTS, February 2019 – now

- 1: Handle pair (Spare part-nr. 48321000)
 - 2: Ceramic headpart, 1/2" (Spare part-nr. 45882000)
 - 2.1: O-ring Ø18.2 x Ø1.7 (Spare part-nr. 0392400M)
 - 3: Ceramic headpart, 1/2" (Spare part-nr. 45883000)
 - 3.1: O-ring Ø18.2 x Ø1.7 (Spare part-nr. 0392400M)
 - 4: Coupling nut 1/2" x 10.5 mm (Spare part-nr. 1290100M)
 - 4.1: Fibre seal dia. 12x2 mm (Spare part-nr. 0138900M)
 - 5: Mousseur (Spare part-nr. 13929000)
 - 6: Pop-up rod (Spare part-nr. 46787000)
 - 7: Escutcheon (Spare part-nr. 48421000)
 - 8: Shank mounting kit (Spare part-nr. 46671000)
 - 9: Pop-up waste set 1 1/4" (Spare part-nr. 28910000)
 - 9.1: Plug (Spare part-nr. 07182000)
 - 9.2: Eccentric rod (Spare part-nr. 07052000)
 - 10: Coupling nut 1/2" x 14.5 mm (Spare part-nr. 1290200M)*
 - 11: Mounting wrench (Spare part-nr. 19017000)*
 - 12: Eccentric rod (Spare part-nr. 07341000)*
- * Optional accessories