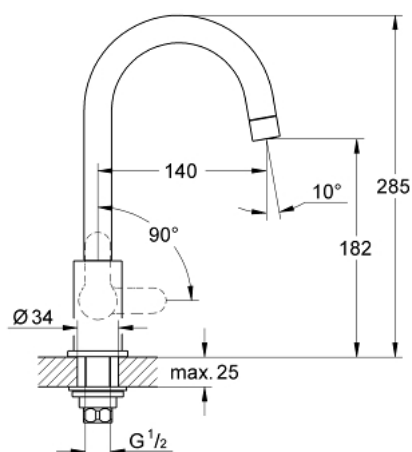


31 223 000 **BAUEDGE SINK TAP 1/2"**

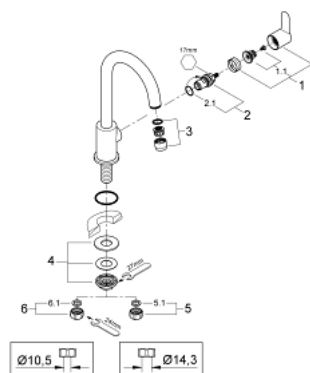


**PRODUCT DESCRIPTION**

- Colour: chrome
- single hole installation
- metal lever
- ceramic headpart 1/2", 90°
- swivel tubular spout
- mousseur
- GROHE Long-Life finish
- fixation nut



## 31 223 000 BAUEDGE SINK TAP 1/2"



### SPARE PARTS, June 2010 – now

- 1: Handle (Order-nr. 48142000)
- 1.1: Replacement handle connection kit (Order-nr. 45186000)
- 1.1.1: O-ring  $\varnothing 18.2 \times \varnothing 1.7$  (Order-nr. 0392400M)
- 2: Ceramic headpart, 1/2" (Order-nr. 45882000)
- 2.1: O-ring  $\varnothing 18.2 \times \varnothing 1.7$  (Order-nr. 0392400M)
- 3: Mousseur (Order-nr. 13928000)
- 4: Shank mounting kit (Order-nr. 45004000)
- 5: Coupling nut 1/2" x 14.5 mm (Order-nr. 1290200M)
- 5.1: Fibre seal dia. 12x2 mm (Order-nr. 0138900M)
- 6: Coupling nut 1/2" x 10.5 mm (Order-nr. 1290100M)
- 6.1: Fibre seal dia. 12x2 mm (Order-nr. 0138900M)